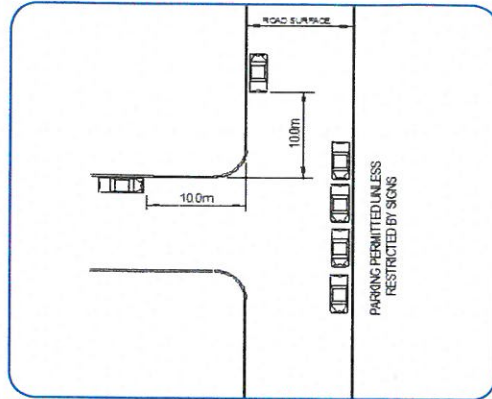


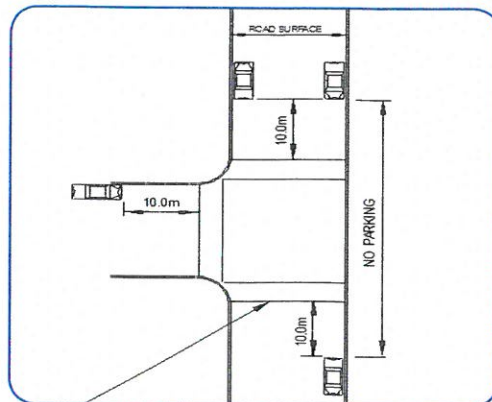
T Intersection 1

Vehicles cannot be parked within ten metres (30 feet) of an intersection unless there is a metered or signed stall. However, you can park along the continuous side of a "T" intersection unless there are signs that say not to (as pictured).

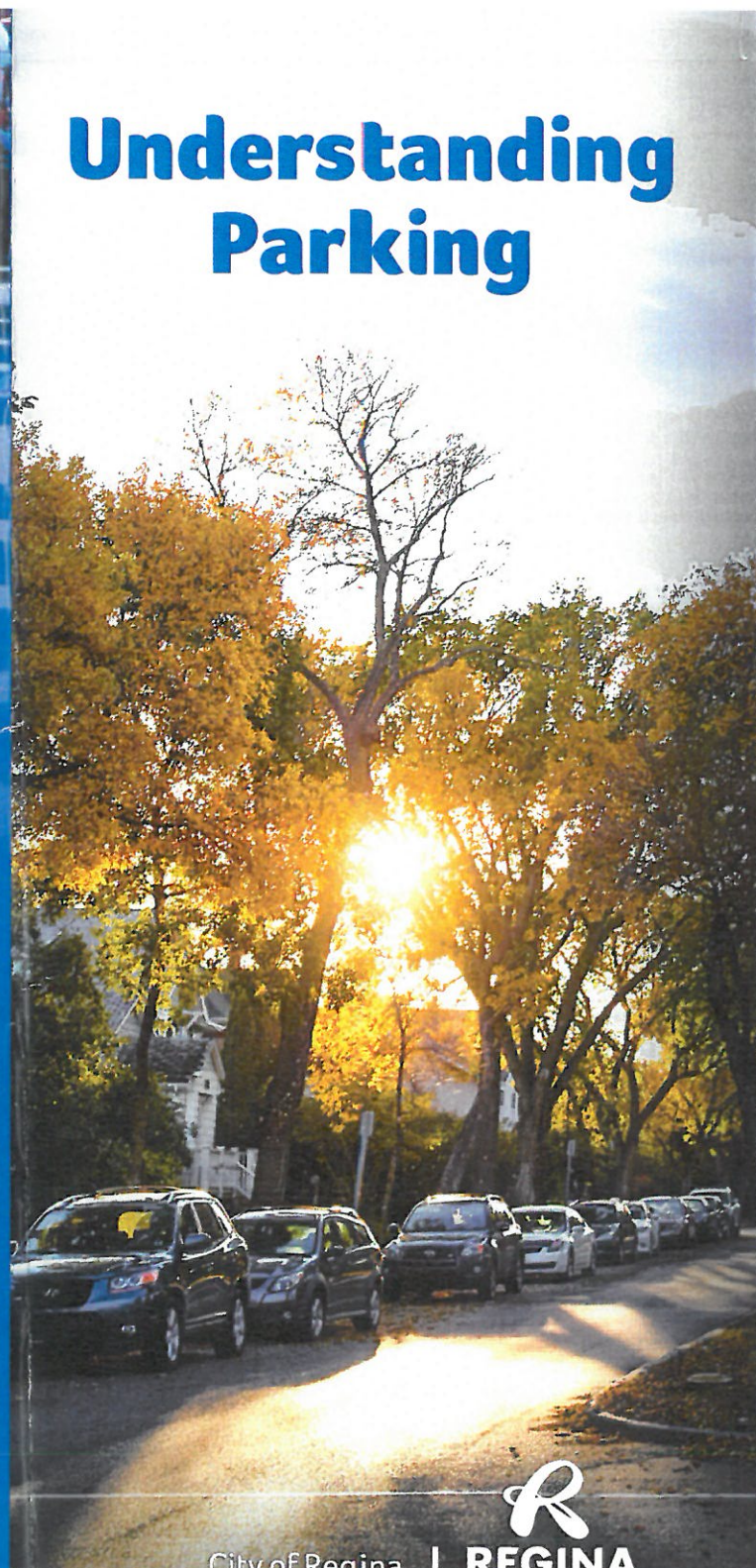
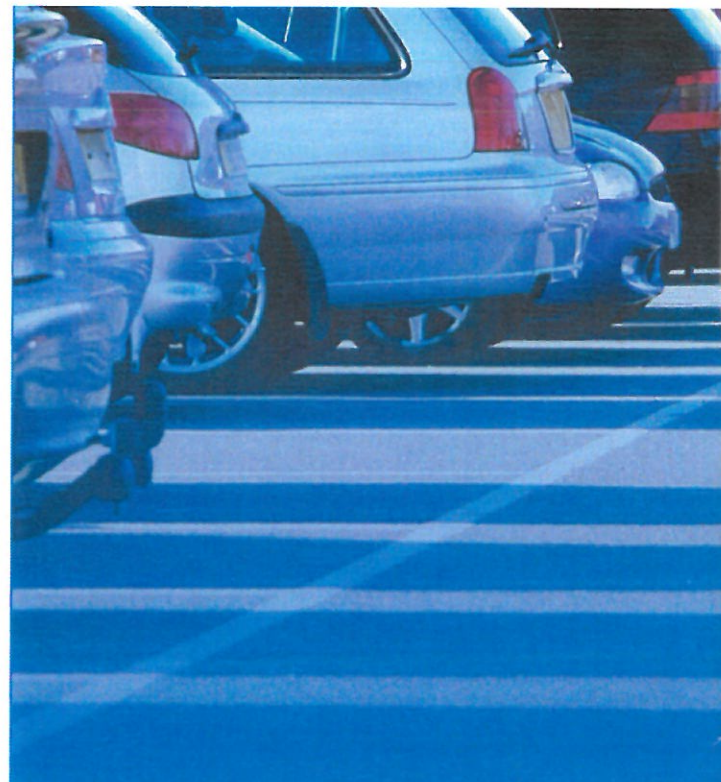


T Intersection 2

Vehicles cannot be parked within ten metres (30 feet) of an intersection with a painted crosswalk. If there are crosswalks at a "T" intersection, you cannot park along the continuous side (as pictured).



Understanding Parking



City of Regina |  **REGINA**
Infinite Horizons

For more information, contact
306-777-7000 or visit Regina.ca.

10 WAYS TO AVOID PARKING TICKETS

1. **Watch and follow the signs** – Parking is typically signed to create clarity avoid confusion.
2. **Know parking options** – metres, parking lots or parkades
3. **Know the difference between no parking and no stopping**
4. **Leave the bus stops open for buses**
5. **Park safely near schools**
6. **Designated disability stops are for those with disabilities**
7. **Fire hydrants need to be accessible**
8. **Respect residential time limited parking and don't park in alleys**
9. **Intersections and cross walks have parking standards**
10. **Err on the side of caution** – If you are unsure of your parking choice, find another spot. A poor parking decision can lead to impacts on others or a ticket for you.



Parking Meters

Parking rules are typically posted on the meter. Meters are in effect from 8 AM to 6 PM Monday to Friday with a two hour time limit. You must move your vehicle to the other side of the street or to another block to avoid a violation. This gives many an opportunity for prime parking spots. Meters are free on Saturdays, Sundays and statutory holidays, but on Saturdays, the time limit is enforced. You must park within two metres (six feet) of the meter. If a meter not working, avoid the stall. You can report the meter number to the City, if you wish, so that it can be repaired.



Curb Distance

Vehicles must be parked within two feet (60cm) of the curb to ensure the vehicle and those inside it are protected from other moving vehicles.



No Parking

Vehicles can only stop briefly to actively drop someone off or pick someone up in this zone. You may not park your vehicle and wait for someone.



No Stopping

Vehicles must not stop here for any reason, including dropping off or picking up passengers. You may only stop here to obey traffic signals or signs, for emergency personnel, traffic flow, or due to an emergency.



Bus Stops

Vehicles must not stop in a signed Bus Stop Zone at any time. These spaces are required for Transit buses to safely drop off and pick up passengers.



School Parking

Children's safety is paramount. You may not park or wait to pick up a child in a no parking or no stopping zone. These zones help to ensure drivers and students have clear sight lines. If there is no pick-up or drop-off zone, follow signage and park in an authorized area.



Disability Parking

Only those with a disability sign may park in these spaces. Illegally parking in these spots often leaves those who need them without access to their destination.



Fire Hydrants

You can help the Fire Department save lives and property by not parking in front of fire hydrants. Your vehicle should be at least two metres (six feet) from the centre of the hydrant.



Residential Parking

There are parking time limits in some Regina neighbourhoods to balance the needs of all parkers. The limits enable business patrons to shop, others to run errands or attend appointments, at the same time ensuring residential streets are not overrun by non-resident parkers.



Alley Parking

No vehicle can park in an alley unless it is being actively loaded or unloaded and is not blocking traffic. Commercial delivery companies can receive a permit allowing delivery vehicles to park for up to ten minutes in an alley from the City's Parking Services Branch.

10 WAYS TO AVOID RECEIVING A PARKING TICKET

1 Use off-street parking.

Does your doctor's appointment usually run late? Do your meetings take longer than two hours? If so, you should consider using off-street parking. Bylaws require vehicles be moved to the other side of the street or another block after two hours, no matter what, when meters are in effect. On-street metered spaces and time limited zones are meant to encourage turnover, so if you're going to be in the area more than two hours, using a parkade or parking lot would meet your parking needs.

2 There's a difference between "No Parking" and "No Stopping"

Signed "No Parking" zones mean you cannot stop unless you are actively dropping someone off or picking them up. "No Stopping" zones mean you cannot stop at all, unless traffic lights, signs or emergency personnel require you to.

3 Watch for signage.

The City puts up signs so that you know what you can and can't do. Most importantly, signs are meant to regulate traffic flow, ease congestion, create turnover and ensure the public's safety. If you're unsure of what a sign means, be cautious. Signs that don't have time restrictions apply 24 hours a day.

4 Leave bus stops for buses.

Parking in a bus stop while waiting for a friend or running to the ATM may seem harmless, but it can have a big impact. If buses can't pull into that space, traffic flow can grind to a halt. It also may force buses to load or unload passengers in the traffic lane, putting other drivers and passengers at risk.

5 Park safely around schools.

The safety of our children is paramount! Make sure you don't park or wait for your child in areas signed "No Parking" or "No Stopping." Those are in place to ensure drivers and students have clear sight lines and kids don't dart out from behind parked cars. If your school doesn't have designated drop-off or pick-up zones, make sure you follow signage and park in a legal spot.

6 Read the parking meters.

The City uses parking meters in high-demand areas to ensure there is turnover in parking spaces. They have their own rules, which should be posted on the meter itself. You must pay for meter parking from 8 AM to 6 PM Monday to Friday. Meter parking is free on Saturdays, Sundays and holidays. Please note if the parking meter is not working, the stall should not be used. Contact the City of Regina Parking Services Branch if you notice a meter is broken.

7 Avoid driveways and corners

It's tempting to squeeze in wherever you can, but think twice about parking at the end of a block or next to a driveway. Vehicles cannot be parked within ten metres (30 feet) of the curb of an intersection or two metres (six feet) from a driveway. Drivers and pedestrians need a clear view when approaching an intersection or backing out of a driveway to ensure the street is clear of incoming traffic.

8 Leave designated parking spaces for people with disabilities.

Be courteous and leave signed disability parking spaces for those who have a valid Disability Parking placard. Illegally parking in these spaces often leaves those with disabilities no other parking option.

9 Respect residential "time limited" parking areas.

In responding to neighbourhood concerns regarding parking pressures, the City has established time limited areas, like those surrounding the downtown. They look to balance the needs of all users – by allowing business patrons to shop, run their errands or attend appointments, as well as protect residential streets from being overrun by non-residential parkers.

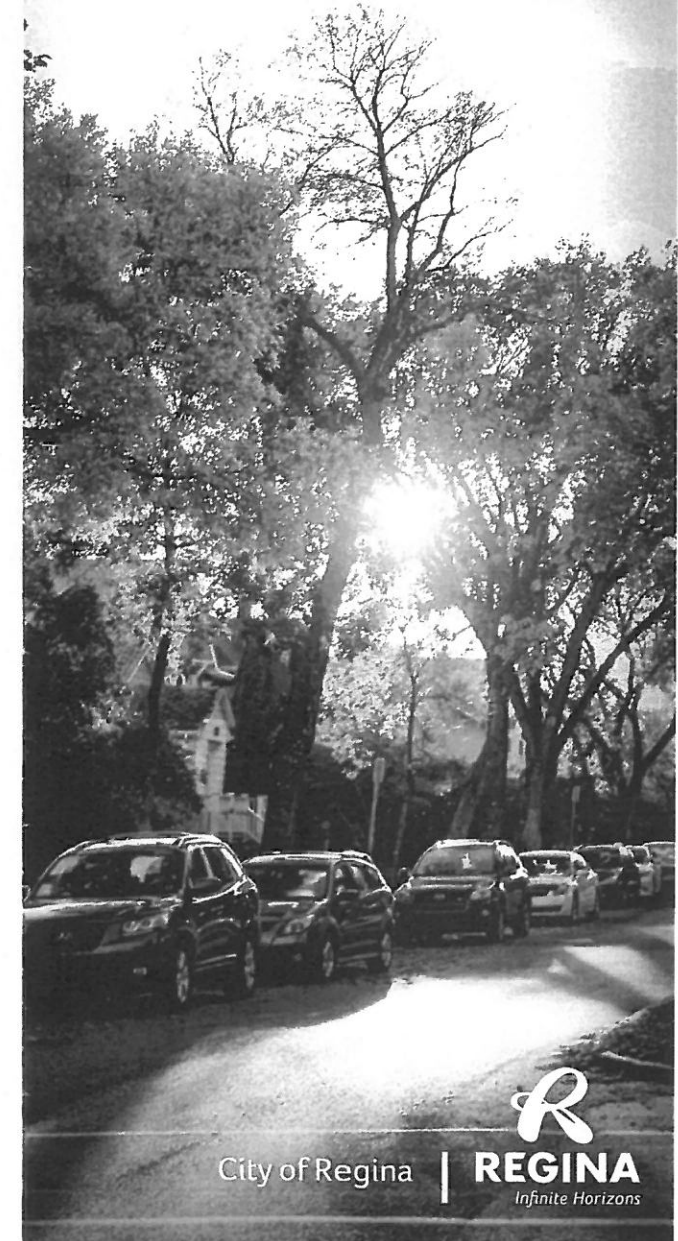
10 Err on the side of caution.

Have you followed the posted signage? Have you parked too close to an intersection? Are you unsure if it is a legal spot? If this is the case, it is best to find another spot. A poor parking decision can lead to an impact on others and a ticket for you.



For more information, contact
306-777-7000 or visit Regina.ca.

PARKING TIPS 101



ON-STREET PARKING RULES



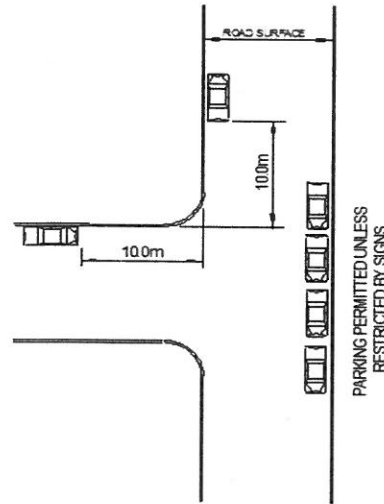
NO STOPPING

Drivers must not stop in the area marked "No Stopping" for any reason, not even to drop off or pick up passengers. You may only stop for traffic signals or signs, emergency personnel, traffic flow, or because of an emergency.



PARKING METERS

Parking meters are in effect from 8 AM to 6 PM Monday to Friday, but are free on Saturdays. Monday through Saturday there is a two-hour time limit, which means you must move your vehicle to the other side of the street or another block after two hours. Meters are not in effect on Sundays or on holidays. You must also be parked within two metres (six feet) of the meter pole.



T INTERSECTION 1

Vehicles cannot be parked within ten metres (30 feet) of an intersection unless there is a metered or signed stall. However, you can park along the continuous side of a "T" intersection unless there are signs that say not to (as pictured).



NO PARKING

A "No Parking" sign means you can only stop to actively drop someone off or pick someone up – you may not park your vehicle and wait for someone.



FIRE HYDRANTS

You can help the Fire Department save lives and property by not parking in front of fire hydrants. Your vehicle should be at least two metres (six feet) from the centre of the hydrant.



BUS STOPS

Vehicles are not allowed to stop in a signed Bus Stop Zone at any time. These spaces are required for Transit buses to drop off and pick up passengers safely.



CURB DISTANCE

Vehicles must be parked close to the curb to ensure the vehicle and those inside are protected from traffic. You should be within two feet (60 cm) of the curb or else your vehicle will be in danger, encroaching on traffic lanes.



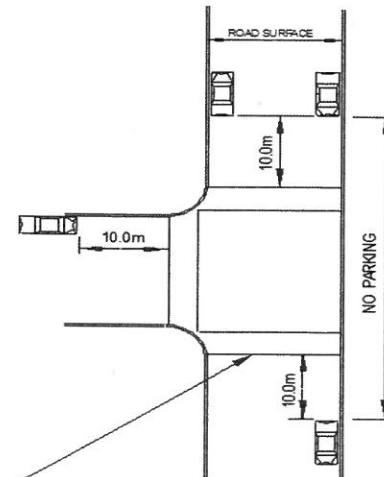
BUS LANES

Bus Lanes should only be used for City Transit buses and emergency vehicles. No one should drive in a bus lane during posted hours unless they are turning right at the next intersection, alley, or driveway.



ALLEY PARKING

No vehicle can park in an alley unless it is being actively loaded or unloaded and is not blocking traffic. Commercial delivery companies can receive a permit allowing delivery vehicles to park for up to ten minutes in an alley from the City's Parking Services Branch.



T INTERSECTION 2

Vehicles cannot be parked within ten metres (30 feet) of an intersection with a painted crosswalk. If there are crosswalks at a "T" intersection, you cannot park along the continuous side (as pictured).